



# GAT MONTHLY MEMBERSHIP PROGRESS REPORT

Results as of: 12/31/2020

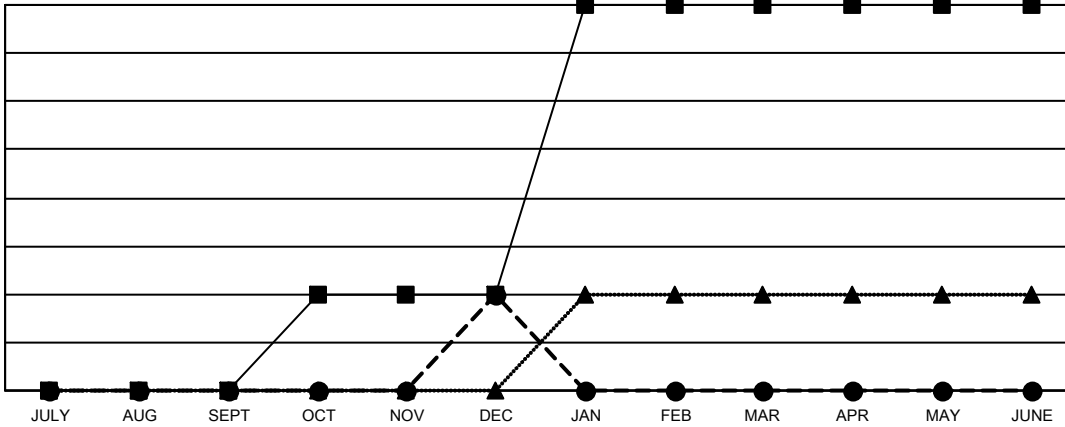
Multiple District 29

LOCATION: WEST VIRGINIA

Clubs			
RESULTS FOR 2020-2021			
QUARTER	NEW CLUB GOAL	NEW CLUBS	DROPPED CLUBS
JULY/AUG/SEPT	0	0	0
OCT/NOV/DEC	1	1	0
JAN/FEB/MAR	3	0	0
APR/MAY/JUNE	0	0	0

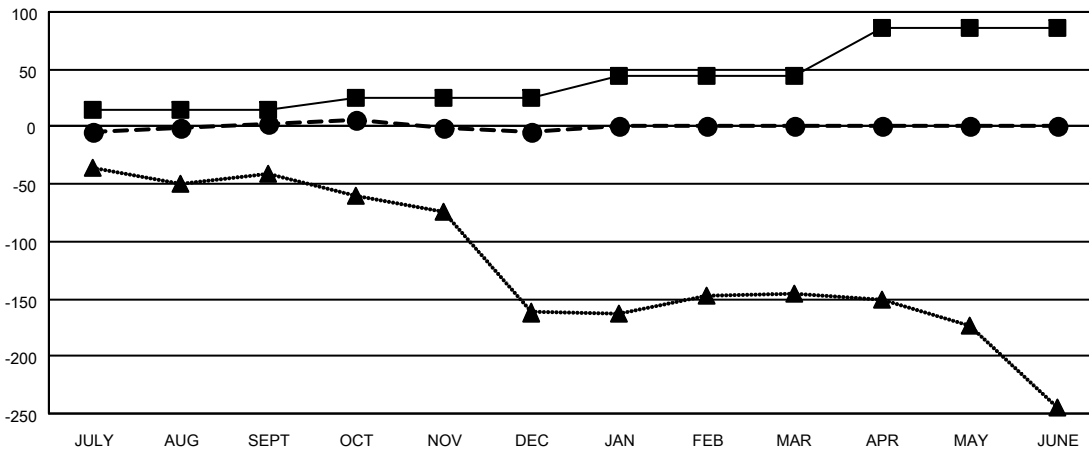
Members			
RESULTS FOR 2020-2021			
QUARTER	MEMBER GROWTH NET GOAL	MEMBER GROWTH ACTUAL	DROPPED MEMBERS ACTUAL (including transfers)
JULY/AUG/SEPT	15	82	68
OCT/NOV/DEC	10	102	94
JAN/FEB/MAR	20	0	0
APR/MAY/JUNE	41	0	0

GOALS AND ACTUAL NEW CLUBS CUMULATIVE



- - CURRENT YEAR GOALS FOR NEW CLUBS
- - CURRENT YEAR ACTUAL NEW CLUBS
- ▲ - LAST YEAR ACTUAL NEW CLUBS

GOALS AND ACTUAL MEMBERS CUMULATIVE



- - MEMBER GROWTH NET GOAL
- - MEMBER GROWTH ACTUAL
- ▲ - LAST YEAR MEMBERSHIP ACTUAL

DROPPED CLUBS: 0	
<b>DROPPED MEMBERS</b>	
DECEASED	47
CLUB CANCELLED	0
OTHER	115
<b>TOTAL</b>	<b>162</b>

40 CLUBS OF 167 ADDED 1 OR MORE NEW MEMBERS

GENDER DISTRIBUTION	
MALE	2,456 (64.06%)
FEMALE	1,378 (35.94%)

[CLICK HERE FOR CUMULATIVE MEMBERSHIP DATA](#)

TOTAL FAMILY UNIT MEMBERS	1,162
FAMILY MEMBERS PAYING HALF DUES	595